

# Happy New Year!



## RISTWATCH

RCVFD Quarterly Newsletter   P. O. Box 2, Bellvue, CO 80512   Issue No. 81   January, 2017

---

### A Letter from the Acting President

Hi RCVFD community, and welcome to the end of 2016! (If you get this at the start of 2017, well...it was written at the end of 2016. No harm, no foul).

It's expected, and that's why it's being done: Here's your RCVFD year in review, and a look ahead.

#### We've Had Some Changes

- The Amazing Mike Thompson...moving on.  
After guiding RCVFD's BOD through multiple fires, an epic flood and the rebuilding of RCVFD's Station 4, Mike Thompson has resigned as President of the BOD. Mike - Thank You! Your service to this community is deeply appreciated.
- Shane Downing is no longer filling the Vice President position.

- A changing of the Area Reps Guard

Joanne Thompson (Stove Prairie), Jordy Levick (Rist Canyon), Jennifer Nolte (Whale Rock), Karen Steadman (Stove Prairie) and Don Pytlik (Buckhorn) have vacated their chairs. BOD area reps take the pulse of their community. Thanks for all the check-ups!

#### New Talent!

- And the new RCVFD BOD President is . . . Dale Snyder! We expect great things from Dale. Thanks for leading the team!
- No President is complete without a competent Vice President (right?) Thanks to Jennifer Nolte, we now have one!

*Cont'd. on next page*

## Letter from the Acting President, cont'd.

- While it's sad to see familiar area reps move on, RCVFD is gaining some great new people! Juana Jackson is the new Rist Canyon rep, Brian Finley is stepping up for Whale Rock and Jill Smith is our rep for Stove Prairie. (Thanks!) We are still looking for a Buckhorn rep. If you, or someone you know, would be interested in this position, please contact Dale at [RCVFDBoard@rcvfd.org](mailto:RCVFDBoard@rcvfd.org). Also, new this year is the At Large Representative being filled by Shane Downing.

### Exciting New Fund Raising Opportunities!

Colorado Gives, Amazon Smiles, and a new Fine Art Auction team with great ideas for 2017! These are a few of the areas the BOD is employing to keep RCVFD operating at the level of excellence we've come to expect.

### Our New Chief is Awesome!

Our old Chief was awesome, too. But after a year as RCVFD's ops leader, Carol Dollard is, well, awesome.

So as 2016 comes to a close we thank those who have served, are excited and grateful to those who are joining, and as always, are indebted to the support we receive from RCVFD's community.

Sincerely,

Shane Downing

Acting President, RCVFD

**I hate those people who  
knock on your door and tell  
you how you need to be  
"saved" or you'll "burn"  
Stupid firemen.**

### **Thanks are due . . .**

To outgoing Area Reps, Jordy Levick, Don Pytlik, Karen Steadman and Joanne Thompson. Your participation was invaluable and will be missed.

To outgoing Festival chairs, Louise Creager, Becky Lunt, and Ann Nichols. Your hard work and dedication were critical to the festival's success.

**Thank you all, and to all the unsung  
heros who volunteer at the festival  
and in the community.**

"Volunteers do not necessarily have the  
time; they just have the heart."

~Elizabeth Andrew

## Thank You, Mike Thompson, Out-going RCVFD President



*Mike Thompson and Richard Lund yukking it up at Station One.  
Photo by Deb Pedersen*

A GREAT BIG THANK YOU goes to the Rist Canyon Volunteer Fire Department's out-going President of nine plus years, Mike Thompson. Since he has been at the helm, we have had incredible challenges and grown in so many ways. Mike remained in his home during the Crystal Park and High Park Fires, as well as the flood of 2013, to help the firefighters with communications with the outside world, and to get much needed materials and equipment during these major events. In addition, he played a major part in getting Whale Rock Station 4 rebuilt; and helped clear the path for the Rist Canyon Station 1 to be rebuilt to launch us into this new century. We are grateful for your leadership, expertise, and your friendship! Please give him a big Thank You, or honk, when you see him.

### **RCVFD Monthly Meeting Schedule:**

Meetings at Firehouse #1 on Rist Canyon Rd.

Operations – 1<sup>st</sup> Wed. @ 7:00 PM  
Fire Training – 2<sup>nd</sup> Wed. @ 7:00 PM  
Board Meeting – 3<sup>rd</sup> Wed. @ 7:00 PM  
Medical Training – 4<sup>th</sup> Wed. @ 7:00 PM





## Chief's Report

I had an encounter recently that gave me a few winter safety reminders. A few days before Christmas, Harry and I were headed home and were first on scene at a head on collision in Laporte near the American Legion. A truck lost control on the ice and crossed into the oncoming lane—destroying a small car. Miraculously nobody was badly injured thanks to seat belts and air bags. However, the temperature that night was fifteen below zero. We gathered up all the blankets and coats we could to try to keep the patients warm while waiting for emergency responders to arrive. Because the car was destroyed, there was no “running the heater to keep warm” and we couldn’t move them due to the magnitude of the impact and the potential for injuries we couldn’t see. So my

lessons that night were: Dress for the weather even if you don’t expect to be out in it; Keep a good blanket in the car; and another reminder to Always wear your seat belt!

Do what you can to stay safe and I am looking forward to working with you all in 2017!

*Carol Dollard*

*RCVFD Chief*



**If you have an  
emergency, always**

**CALL  
9-1-1**

**Mile  
High**  
LAND & HOMES, INC.

Happy New Year!

If you're thinking about selling your property this year, give us a call. We know this area like no one else, we are 3rd & 4th generation  
**Larimer County Natives!**

Visit us online at:

[www.milehighland.com](http://www.milehighland.com)

Office: 970-419-4900

Email: [milehighland@gmail.com](mailto:milehighland@gmail.com)

Ronni Aragon, RSPS, GRI

Norman Wyatt, CNE, Green

Briana Aragon, Broker Associate



20 acres at the end of the road, abutting National Forest on the South. Lots of local wildlife, alternative energy required, 4WD access, voluntary road association. Don't miss out on these views! Offered at \$80,000



170 Contiguous acres in Redstone Canyon high atop the ridge with 360 degree views of the Front Range & Pikes Peak on a clear day! Multiple building sites or make this your private mountain retreat. Offered at \$450,000.



Crystal Park cozy cabin on 4 acres with large deck to enjoy the views. Open floor plan with kitchen living room and wood-burning stove. 1 bedroom with potential for another. Alternative energy required. Currently a seasonal cabin. \$109,000



2 sides National Forest at the end of the road. Approximately 10 acres off the grid, with rolling timber and meadows. Lots of wildlife and scenic mountain views. Year round access on 44H, private road to property. \$125,000



1 bed/1 bath log cabin on 20 acres in Paradise Park. Vaulted ceilings, open floor plan, wood-burning stove & propane heat with 960 sq. ft. detached garage. Well/septic, solar/generator. Abuts National Forest & located in Area 19. \$249,500



Stunning Views from this 22+ acres. South facing meadows with tall pines and seasonal creek, off paved road with lots of local wildlife. This is 2 lots, 5 ac with home and separate lot approximately 17 acres with 36 x 22 ft heated shop. \$450,000



## 2017 Board of Directors

### **Dale Snyder, President**

Dale has lived in Davis Ranch since 1994. He is a retired builder and a past board member.

### **Carol Dollard, Fire Chief and 2nd Vice President**

Carol has served as Fire Chief since October 2015. She joined RCVFD shortly after moving to the canyon in 1983 and has been an active firefighter since then. In her “other life” she is an Energy Engineer for Facilities Management at Colorado State University.

### **Jennifer Nolte, Vice President**

Jennifer has been a landowner in the Whale Rock area since 2004, and on the RCVFD board since 2014. She works as a Registered Nurse at Poudre Valley Hospital.

### **Richard Lund, Treasurer**

Richard has lived in Rist Canyon since 1991 and been a volunteer for the RCVFD since 2001, serving as a Board Member, President, and now Treasurer.

### **Leisa Taylor, Secretary**

Leisa moved to Rist Canyon in 2013 and has been on the BOD for two years. Leisa is the Outreach Coordinator with the Global Village Museum of Arts and Cultures in Fort Collins, a Davis Ranch Road walker, crazy cat lady and baker of the best Southern pecan pie you’ve ever had! Jack Daniels is the secret ingredient.

### **Bridget Tisthammer, Ristwatch Editor**

Bridget and her husband, Thom, moved to Rist Canyon in 1989. They raised two children here, who went to Stove Prairie school. She has been involved with the RCVFD as Ristwatch editor since 2015. Bridget is a CSU Extension Master Gardener for Larimer County and enjoys digging up rocks, birdwatching and drinking beer on the patio.

### **Shane Downing, Area Rep at Large**

Shane, Teri, Olivia, Keston and Tannis moved to Rist Canyon near Fire Station 1 in 2003 because Shane, being from Upper Michigan, prefers fewer people and more snow (yes, it’s all about Shane). Keston and Tannis attended

Stove Prairie (loved those years!) while Olivia finished high school in Fort Collins. Shane’s an engineering manager, but would rather make good pizza and drink great beer, in both those orders. Shane has previously been the BOD Vice President, a brief stint as Lame Duck President, and the Rist Canyon rep.

**Buckhorn Rep**—Position open.

### **Deb Pedersen, Davis Ranch Rep**

Deb lives in Davis Ranch with her family. She enjoys running in the Canyon and the great people!

### **Juana Jackson, Rist Canyon Rep**

Juana and her husband, Tim, have lived in Rist Canyon since 2005. They have two beautiful daughters who attended Stove Prairie school. Juana was born in Chicago but lived in Mexico for 16 years, and is bilingual.

### **Jill Smith, Stove Prairie Rep**

Jill is a long-time resident of the Stove Prairie area, and her two children attended Stove Prairie school. Jill is also an avid Oregon Ducks fan, which explains all the green and yellow clothes! :) Win, Lose or Tie: I’m a Duck until I Die!

### **Louise Creager, Stratton Park Rep**

Louise Creager moved to the Rist Canyon area in 1989. Her children attended Stove Prairie, and she has been involved with RCVFD in many capacities: first as Vice-President in 1990; a Mountain Festival coordinator; founder and chair of the Firefighter Silent Auction for five years; originator of the fire department’s 501(c)3 non-profit status; Chair of the Fine Art Auction for three years; and Board Member as Stratton Park Road Representative since 2009.

### **Brian Finley, Whale Rock Rep**

Brian has owned property in Whale Rock since 2008. He is a career firefighter, working with the National Forest Service, Colorado Parks and Wildlife and the Alpine Hotshots. Brian is currently a student at CSU, working on his Fire Science degree.

## Special Requests

I started this column for special, mostly one-time tasks that help keep the RCVFD strong. Not everyone can carry a pager, but many can do a special thing that can free up others for responses. As a result of special requests, Jeremy Lawson stepped up and gave us a new sign at Whale Rock that looks great. Bridget Tisthammer stepped up after my request last month and is taking on the role of pursuing grants for the Department (in

addition to the time she already commits as an RCVFD Board member).

It is folks like this who make me proud to be part of this community. My next request is related to warm weather so I will defer my special request until the next Ristwatch. Stay warm and have a safe winter.

*Carol Dollard*  
*RCVFD Chief*

How does Santa keep the weeds out of his garden?

With a Hoe-Hoe-Hoe.

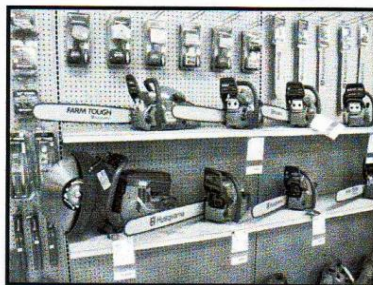
A woman took her dog to the parlor for a haircut and asked what it would cost. Being told that it would cost her \$50, she was outraged.

"I only pay 30 bucks for my own haircut!" she said.

The groomer replied, "That may be true. But then you don't bite, do you?"



*Come check out our full line of  
Husqvarna power equipment.*



**225 Frontage Road - Fort Collins, CO 80527**  
**221-5300**

Check out our website at: [www.pvcoop.com](http://www.pvcoop.com)

## **Thank You, Ristwatch Advertisers!**

**The following advertisers help us pay for the Ristwatch:**

**Bank of Colorado  
Buckhorn Builders  
Buckville Energy Consulting  
Canyon Spirit Gallery  
Colorado Spas/Bullfrog Spas  
Continental West Realty  
Louise Creager  
Fort Collins Nursery  
FyrePro  
High Altitude Associates  
Lawson's Handyman Services  
Lundstedt Automotive  
Midtown Chimney Sweeps  
Mile High Land and Homes  
Phantom Screens  
Poudre Valley Co-op (Two ads every issue)  
Ron's Equipment  
Shipp's Plumbing and Heating (New this issue!)  
Stove Prairie Community Church  
Stove Prairie School PTO  
Wattle and Daub Contractors  
Whalesworth Woodworking  
Wolf Roofing**

**Please support these businesses, and while you're talking to them, thank them  
for their advertising dollars!**



# Classified Ads and Community Submissions

## Something to sell or rent? Place an ad in the Ristwatch!

If you're like me, you've had trouble selling stuff because people don't drive to Rist Canyon to look at small or single items. Why not advertise to your neighbors?

Just \$1 per line for a 2 inch ad! No businesses, please. For business ads, please see the ad under "Here's My Card".

## Have some interesting news or photos?

If you have fire department or community news or photos that you'd like to share, we'd love to publish them! Send submissions to [ristwatch@rcvfd.org](mailto:ristwatch@rcvfd.org). Images need to be black and white in .pdf format. Thanks!



Thank you all for your  
generosity throughout this  
year. We appreciate you.  
Jan, Ben, and Marty  
Bellvue Post Office

### Your Local Real Estate News

#### Buckhorn ~ Stove Prairie ~ Rist Canyon

##### 2016 IN REVIEW!

There were many transactions occurring in our area during 2016! People are looking to our area for privacy, lack of HOA's, and proximity to the Fort Collins/Loveland area. Here is a quick review for you. For a more comprehensive list of properties available or sold, feel free to give me a call and I will give you more details.

There are, as of December 28, 2016, 15 properties for sale. Of these 11 are land and 4 are residences. There are 3 properties pending (under contract): 2 are land, and 1 is a residence.

Properties which have sold in 2016 are as follows:

Land: 11 land parcels sold. While figuring average price per acre in our area depends on many factors, taking the data as is, the average price per parcel is \$165,377. Lowest acreage is 1.4 acres; highest is 320 acres.

Residential: 11 homes sold. Acreage of homes ranged from 3+ acres to over 47 acres. Average home price \$382,136.

Prices have been rising during the past couple of years. It would be my pleasure to prepare a complimentary analysis of your property. Feel free to give me a call!

NOTE: Broker was not necessarily a party to all transactions. Brokers information from IRESis® brokers MLS system. Information deemed reliable but not guaranteed.



Louise Creager  
ABR, GRI, REO, CNE, SFR, e-PRO  
**NOW - Certified Military Residential  
Specialist! CMRS**  
Broker Associate

Moving you forward!  
Stratton Park Resident  
RCVFD member since 1989 ☺  
970.217.6843  
[LouiseCreager@gmail.com](mailto:LouiseCreager@gmail.com)

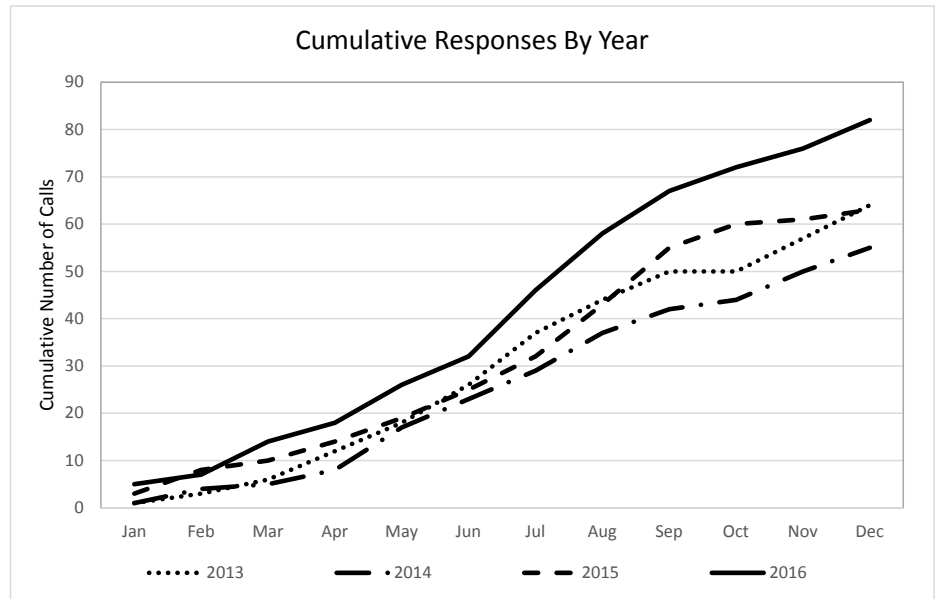
**Your Neighbor Since 1989**

**BUYERS ARE LOOKING-** Thinking of selling?  
No gimmicks, no games  
Always complimentary market analysis.

Call Today! Cheers!

## RCVFD Responses 2016

Wow—what a busy year. We had a total of 80 responses. This year included a spell of several months where we had at least one call every weekend. Our busiest day involved three separate calls. The calls were split about 70%/30% with more medical than fire calls. Medicals were pretty evenly divided between MVAs (motor vehicle accidents) and other medicals. Fire was primarily wildland fire and smoke reports (that turned out not to be fires).



The graph shows how many more calls we had in 2016 compared to previous years—none of them were of the magnitude of the fires and flooding in 2011, 2012 and 2013—but keeping us very busy none-the-less. Responders also attend training to make sure we are honing our skills, so many thanks to all the folks who donated hundreds of hours in 2016.

Last minute update: Well, 2016 was not quite done when I submitted my article for the Ristwatch, so of course we have had two additional calls—one medical and one wildland fire— making a total of 82 for the year. I wanted to add this note as a reminder that although it has been cold, it is still quite dry and it has been windy! Both these things can cause "dead" fires to rekindle and come to life—even days later. This seems to be what happened between Christmas and New Years resulting in a small fire on a very windy night. We were lucky that the fire was in a low spot

relatively sheltered from the winds or we could have had a much bigger problem on our hands. So please always be careful with outdoor burning. Make sure there is sufficient snow cover and there are no high wind events forecast. Also, remember wildland fires can occur any time of year. Here's to a quieter 2017....

*Carol Dollard  
RCVFD Chief*



Will RCVFD find you when they need to? Consider purchasing a reflective sign. Just \$15! All we need is your address. Order today! Call Louise Creager at 970.217.6843.

## RCVFD Becoming a Tax District – Never!

But let's talk about tax districts.....

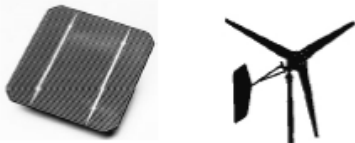
Financial contributions are vital to the fire department—it takes money to keep the RCVFD running—which brings me to a discussion about what it takes to provide emergency services in our community. RCVFD is an all volunteer, donation based agency. This is a source of pride for those of us involved and there is no plan to convert RCVFD to a tax district. However, I want to talk about tax districts to put the financials in perspective. Many neighboring departments are organized as fire districts that are supported with tax revenue. Everyone in these communities pays a mil levy on their property tax for emergency services. The tax rates for these districts vary widely, but the average tax amount is about 10 mils (which is \$1/ year for every \$1,000 your property is worth). So if you had a house that the tax assessor appraised at \$250,000, you would pay \$250/year. Why am I telling you this? Well, I want everyone in the community to understand the level of financial commitment that is necessary to provide emergency services. Our annual drive does not meet the annual operating budget of the Department and we have to conduct fundraising in

many ways to fill the gap. If everyone gave their “fair share” as if we were a tax district, then the RCVFD would have to spend a lot less time with hat in hand searching for funding. RCVFD is a 501(c)3 non-profit, so all contributions are tax deductible. It is easy because there are many ways to give:

- Click the “Donate Now” button at [www.rcvfd.org](http://www.rcvfd.org)
- Select RCVFD as your preference on Amazon Smile. A portion of your purchase will be donated to RCVFD (without adding to your cost). [smile.amazon.com](http://smile.amazon.com)
- Colorado Gives Day—this was our first year to participate in this event, but it is easy and fun. You can donate at any time of the year, but the big day is always in mid-December. <https://www.coloradogives.org/RistCanyonVolunteerFireDepartment/overview>
- Or just mail a check to RCVFD; P.O. Box 2; Bellvue, CO 80512 (we send you an envelope several times a year to make it easy).

While we often put a lot of focus on the big donations, what really keeps us going day in and day out are all the little ones. Thank you for doing your part.

**Go renewable!**  
Solar • Wind • Water



- Solar and wind resource site assessments
- Energy efficiency evaluations
- System design and installation
- Off-grid and Grid-tied
- Troubleshooting and second opinions
- Safety Inspections
- Appraisals
- Accredited training workshops

**Buckville Energy  
Consulting LLC**

Locally owned and operated in the Buckhorn Canyon  
100% off the grid since 1991, references available  
(970) 672-4342  
[info@buckville.com](mailto:info@buckville.com) • [www.buckville.com](http://www.buckville.com)

**Lawson's**  
HANDYMAN SERVICES

Jeremy Lawson  
Owner

970.672.6559  
[jeremy@lawsonshandyman services.com](mailto:jeremy@lawsonshandyman services.com)  
[lawsonshandyman services.com](http://lawsonshandyman services.com)

*Uh oh! Something's broken!*

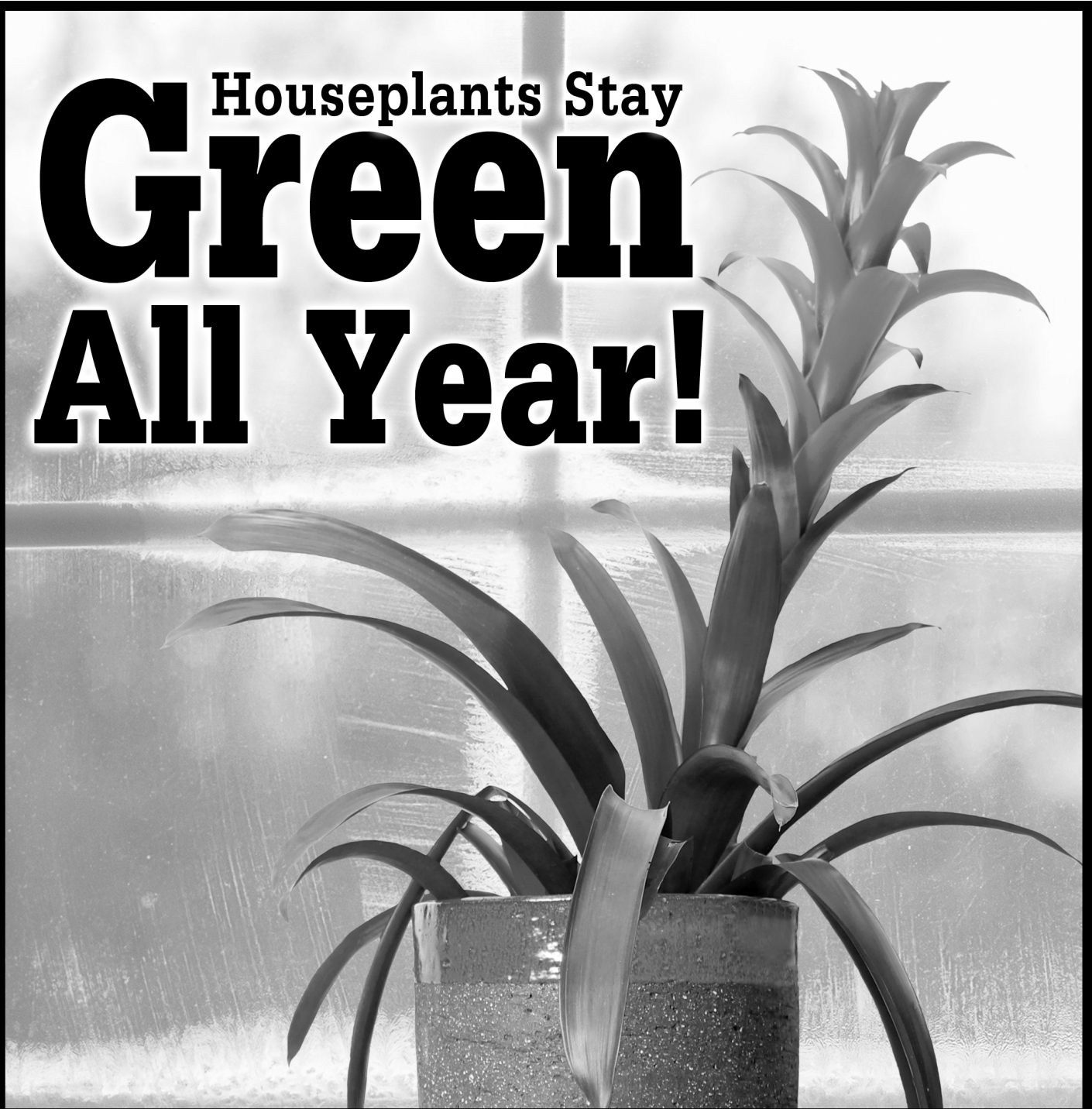
**Proudly Serving Northern Colorado**

***Happy New Year 2017!***

**Professional - Trustworthy - Family**



Houseplants Stay  
**Green**  
**All Year!**



**Plants • Supplies • Gifts • Tools • Fertilizer • Seeds**

**Fort Collins**  
**NURSERY**

**[www.FortCollinsNursery.com](http://www.FortCollinsNursery.com)**

2121 E Mulberry  
970-482-1984  
Open Year Round



# Trees Know when Deer are Eating Them — and How to Fight Back

Picture the woods in early spring—the misty, pale green appearance of trees just starting to sprout, the young deer munching their way across the sun-dappled forest floor. But behind that placid exterior, a battle of wits is raging. And despite not having a brain or any central nervous system to speak of, the trees are pretty wily.

In a study published in the most recent edition of the journal *Functional Ecology*, scientists in Leipzig, Germany describe the brilliant way that wild maple and beech trees figure out when roe deer are eating them—and enact a strategy to make sure the critters don't return for another snack.



The stakes are high for young trees. If they can head off the threat from deer early, the saplings have a chance of catching up with their unbitten peers and making it to adulthood. But too much nibbling will make the trees stunted, or condemn them to death.

So the plants have evolved a complex set of responses specifically to deal with herbivore threats. Whenever a branch is snipped—by a deer, insect or human—trees release “wound hormones” called jasmonates. These chemicals help with the recovery process. They also play a role in interplant communication; when one plant releases jasmonates, their neighbors start to ramp up their defenses against disease and insect attacks as well. It's like a forest-wide alarm system.

But the trees studied in Leipzig seemed able to recognize specific threats, and tailor their response accordingly. When a roe deer was eating their branches, the trees released a second set of chemicals: first the hormone salicylic acid, then bitter chemicals called tannins. The salicylic acid boosts protein production, allowing the trees to regrow what was lost, and the tannins make the trees distasteful to deer, which prevents further snacking. "On the other hand, if a leaf or a bud snaps off without a roe deer being involved, the tree stimulates neither its production of the salicylic acid signal hormone nor the tannic substances. Instead, it predominantly produces wound hormones," Bettina Ohse, lead author of the study, explained in a statement.



**Stove Prairie PTO would like to thank everyone who joined us to celebrate the holiday season and help make our 39th Annual Winter Festival a huge success! We would also like to thank our amazing Silent Auction Donors and Festival Supporters! We couldn't do it without you!**

## Stove Prairie School Offers:

- B.A.S.E. Camp Preschool for 3-5 Year Olds
- Free All-Day Kindergarten, 5 Days/Week
- K – 5 Curriculum w/ Low Student-Teacher Ratios

## Upcoming Events

- Kindergarten Registration & Orientation, February 9, 11:00-12:00 ...Registration all day!
- Volunteer Appreciation Dinner/Bingo March 31, 5:30-7:30


*Your Neighborhood School of Excellence Since 1896!*

To test whether this was truly a tailored response to a roe deer threat, the scientists in Leipzig attempted to do some outsmarting of their own. They simulated roe deer snacking by clipping the trees, then trickling deer saliva onto the broken branches with a tiny pipette. The fake deer attack sparked the same defensive response as an actual bite from a deer, suggesting to the scientists that trees are able to recognize deer saliva and respond to it. Now, Ohse and her team are performing the experiment on other tree species, to see whether some have better defensive mechanisms than others.

Keep that in mind the next time you consider matching wits with a tree.

*Reprinted with permission by  
the Tree Farmer Alert, Oct. 5, 2016*

## Here's My Card . . .



*Remodels*  
*Cabinets*

*Additions*  
*Furniture*

**WHALESWORTH WOODWORKING**

P.O. Box 204 • Bellvue, CO 80512 • 970-498-8908

Larry and Barb Monesson



Jeff Reynolds

*Fireplaces, Stoves, Outdoor Kitchens, & Masonry Heaters*  
*Sales, Service, & Installation*

4631 S. Mason  
Suite B 5  
Fort Collins, CO 80525  
Cell: 970-227-1889

www.fyrepro.com      fyrepro@gmail.com



**Irrigation & Landscaping**

Jordan Levick  
**(970) 567-5396**  
Highaltitudeinc@gmail.com

*Fire clean-up  
& restoration*

**AVAILABLE SERVICES**

- Bobcat w/Attachments
- Driveways
- Excavating
- Flagstone Patios
- Irrigation
- Landscape Design
- Logging
- Moss Rock Boulders
- Outdoor Lighting
- Soil Prep & Grading
- Waterfalls & Ponds
- 4X4 Dump Truck

**“Advertise in the Ristwatch”**  
*(Reaches over 1000 homes!)*

**Ad size - Rates**

Full Page - \$75  
Half Page - \$50  
Quarter Page - \$35  
Business Card - \$15

*“Connecting with Community...  
Connecting with God”*

**STOVE PRAIRIE COMMUNITY CHURCH**



Worship Service every Sunday at 10 AM  
Sky Corral Lodge      482-3237  
8233 Old Flowers Road      Bellvue

**CANYON SPIRIT GALLERY**  
**Pottery & Furniture**  
by  
Bonnie Antich & Scott LeCocq  
(of the Upper Buckhorn)

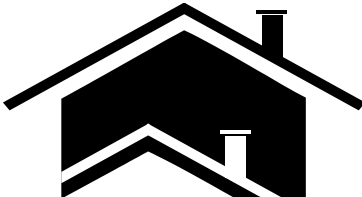
246 Pine St  
Fort Collins, Colorado 80524  
Phone: (970) 221-1778  
Web: <http://www.canyonspiritgallery.com>  
Hours: Thurs & Fri - Noon to 5pm  
Sat - 10am to 5pm



**Wolf Roofing**  
**Rist Canyon**

**Serving Rist Canyon  
and  
All Larimer County**

**Roofing - - All Types**



**References**  
**493-7472**



## RCVFD Outreach at Stove Prairie School

The Stove Prairie fire prevention day was on a foggy morning in October, and I brought our Type 6 Engine, which is one of our brush trucks that has the capability to make foam, which also makes it very useful for structure fire attack and prevention.

I responded with Jane Gordon from the Forest Service, and three wildland firefighters from Larimer County who came up with their brush truck. We started with the kindergarten class, and showed them how to stop-drop-and-roll, and told them about staying low to the ground if there is smoke in the house. We practiced yelling "I'm here, I'm here!" so that if they are ever trapped in a burning structure firefighters would be able to find them. (Yelling is a great activity for energetic kindergarteners.) Jane read them the story of Smokey Bear, and then Smokey, himself, came for a visit. The kids absolutely loved him!



Next we took the first and second graders in one group, and then the third and fourth graders in another, out to the trucks. We made stations for each truck, and Jane had M.R.E.s made up for the kids to try some "firefighter dinner." I showed the kids around the truck, and we talked about the tools that firefighters use, and what they are used for. I asked the kids questions about their houses, and if they had wood stoves or fireplaces, and what they thought was safe behavior when dealing with fires both inside and outside of the home. They asked questions about the gear that firefighters wear, and I told them about each piece, and why it was important.

We talked about what happened to the forest after the High Park Fire, and what the forest had looked like before, and what kind of damage they thought the fire did to the ecosystem in their neighborhood. We talked about what kind of jobs firefighters have to do in addition to putting out fires, and when they should call 911. After we toured the trucks we practiced digging fire-line, and the kids learned the importance of fire-line in preventing the spread of wildfire. They realized just how much work goes into digging line and fighting wildfire. The kids put some pretty good line in, and saved the trees and my truck from our "pretend" wildfire.



All of us had lunch with the kids in the cafeteria, and it was wonderful to see the kids fighting over who got to sit where, and especially how excited all the girls were to see a woman firefighter. The group of girls I sat with at lunch thought that was very cool! Overall, it was a wonderful time and a great learning experience for both the kids and me. I can't wait until next year—I've already got so many more fun things in the works.

*Ashton Croxton  
RCVFD, RC272*

## Ron's Equipment

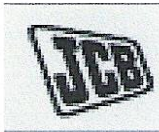
Serving the Rockies for 30 years



MASSEY FERGUSON

Tractors – Equipment

We have everything you need



**WOODS**

**Your Small Farm Headquarters  
Specializing in Compact Tractors  
Construction & Hay Equipment  
New and Used Equipment**

221-5296

906 N US HWY 287, FT COLLINS, CO

Open 8:00 – 5:00 M – F

8:00 – 12:00 Saturdays Spring to Fall

## Your Hometown **COMMUNITY BANK**

**FORT COLLINS**

1609 East Harmony Road, 970.206.1160

1102 Lincoln Avenue, 970.223.8200



# Bank of Colorado

THE WAY BANKING SHOULD BE

[bankofcolorado.com](http://bankofcolorado.com)



MEMBER FDIC  
EQUAL HOUSING LENDER

## SHIPP'S PLUMBING AND HEATING



**970.215.3051**

**FAMILY OWNED & OPERATED  
24/7 SERVICE**

Steve Shipp

Owner/Master Plumber

[steve@shippsplumbingandheating.com](mailto:steve@shippsplumbingandheating.com)

## Poudre Valley



**Automotive and Farm Tires, Feed / Livestock  
Equipment, Auto Repairs and  
Propane**

Ace Hardware Store  
Farm & Ranch Supply  
Car Care Center  
Refined Fuels

**ACE  
Hardware**

Agronomy & Crop Production

**Corhartt**

**Husqvarna**

Our Auto Repair Shop is top notch, stop in & see us.  
Overhaul – Brakes – Transmission

**225 Frontage Road  
Fort Collins, CO 80527  
221-5300**

Check out our website: [www.pvcoop.com](http://www.pvcoop.com)

# Notes from Stove Prairie School

From Debra Randol

## Notes from Stove Prairie School—

Thanks to the parents, teachers and all the folks who attended the annual Winter Festival, always the first Saturday of December. On this day friends—new and old—return to this historic place for a time-honored event. With the proceeds, the Parent/Teacher Organization (PTO) sponsors all field trips and fulfills many needs not met by school budgets; and they make it fun!

## Thursday, February 9th—Kindergarten Orientation/Registration Meeting

We invite parents and prospective kindergartners to attend the Kindergarten Registration and Orientation Meeting at 11:00 on Thursday, February 9th. You can learn about the kindergarten program while your child engages in activities in the K/1 classroom.

Children who turn 5 years old by September 15 can attend the FREE full-day program here at 3891 Stove Prairie Road, west of Bellvue, beginning in the fall. On Thursday, February 9th, parents should bring the child's birth certificate and immunization record to register at any time, 7:00 a.m. to 6:00 p.m., for the 2017-2018 school year.

If you know of families *in our attendance area* with young, pre-school aged children, please let them know about Stove Prairie School. New families can call us at 488-6575 and let us know they live within the area that extends north of the school to Poudre Canyon, south to mile marker 19, west to Pennock Pass in the Buckhorn Canyon, and east over Ford Hill in Rist Canyon down to and including Davis Ranch Road. Thank you!

## School Choice Deadline Friday, February 10th for Elementary Schools

Families who live outside of our attendance area and have young children who would like to, can attend Stove Prairie through the School Choice option in Poudre School District.

To apply, go online to:

<http://psdschoolchoiceapplication.com/site.php> for information and procedures. Applications entered by the deadline will be considered for the 2017-2018 school year.

## Preschool

Preschool meets each morning on Monday, Tuesday, Wednesday and Thursday. Three- and four-year-old children can attend half-days in any combination that parents prefer. Right now, we have some space available. :) Call 488-6585 for more information.

## Year-Round Fundraising in Partnership with Businesses

Thank you to the community members who help the school:

- King Soopers has a splendid deal where we can earn \$250 every time card-reloads amount to \$5,000, earning a 5% donation to the PTO. We keep them here at the school. First you buy a card for \$5, with that much loaded on the card already. Take it to the service deck at a King Soopers store and load with amount you choose. Shop. Use your card to pay for your purchases and a percentage of the total will benefit our school. It also works for gas. *Thank you!*
- Box Tops for Education are found on hundreds of your favorite products including Betty Crocker, Nestle, Ziploc, Avery, Hefty, Kleenex, Pillsbury, Green Giant, Land O Lakes, Hanes, Nature Valley, and MANY more! Every Box Top you turn in to Stove Prairie is worth ten cents for our school and that adds up fast! Just send those to the school. You can also shop online and earn eBoxTops for our school! Simply start EVERY online shopping trip by logging in to the Box Tops Marketplace at [www.btfe.com](http://www.btfe.com). Hundreds of retailers will donate eBox Tops to our school with every qualifying \$10 purchase! The sky's the limit! *We use these funds for the annual Volunteer Celebration in April.*  
*Thank you!*

## Monthly Potluck

Interested community members and parents of preschool children are invited to attend our monthly Potluck to begin at 11:15 on the first Thursday of each month February through May, followed by the PTO meeting at 1:00.

Best wishes to you all!  
Debi



**LIFE'S SHORT...  
RIDE A FIRE TRUCK NAKED**





**Garry Lundstedt**  
ASE Certified  
Master Technician

*Lundstedt*  
*Automotive*

1401 E. Lincoln Ave.  
Ft. Collins, CO 80524

**970-221-9400**

## We have a Medium & Heavy Duty Truck Specialist

Complete Auto and Truck Repair

Including:

- ▶ Transmissions
- ▶ Clutch's
- ▶ 4 WD
- ▶ Performance Modifications
- ▶ Diesel Repair
- ▶ Computer Controls
- ▶ Air Conditioning
- ▶ Dyno Tuning
- ▶ Diesel Emission Testing
- ▶ Registered Emissions Repair Facility

Thank You

We appreciate your business & referrals!

**Gary**  
WEIXELMAN

**CONTINENTAL WEST REALTY**

**COUNTRY LOG HOMES LLC**

4814 Valley Court, Fort Collins, CO 80526

Office: 970-229-1413

Cell: 970-218-1686

Red Feather Lakes: 970-881-2800

Other: 800-462-5870

Gary@GaryW.com

www.GaryW.com

www.coloradomountains.com



**Free No Cost  
No Obligation  
Market analysis for your  
Home or Land and  
\$500 credit at closing for  
Buyers Exclusive  
Buyer Agreement**

*ColoradoSpas*

HOT TUBS & BILLIARDS

Since 1978



**6208 S College Ave  
Fort Collins, CO 80525  
970-223-5197**

[www.coloradospas.com](http://www.coloradospas.com) or [www.bullfrogspas.com](http://www.bullfrogspas.com)

mailto: [info@coloradospas.com](mailto:info@coloradospas.com)

Located 1.25 miles south of Harmony and College on the East Side of College Avenue Just south of Poudre Valley Feed

**bullfrog**  
spas



## **December 31, 2016 Annual Drive Budget \$69,969 / 2016 Donations \$58,285**

Aberle, Ray / Jen	Conboy, Darryl / Connie	Hanson, Charles / Sheryl
Abramson, R. / C. Volpe	Coors, James	Hanson, Mitchell / Kathy
Adams, Charles / Rita	Coulter, Dean / Nancy	Harr, Tom Jr. / Bonnie
Almquist, Clayann	Cox, Charles	Hartzell, Lloyd / Sharon
Alvarez, Raul / Barbara	Cox, Clay / Kathy	Havis, Robert
Anders, Marjorie	Creager, BJ / Louise	Hebbert, Roger / Bonnie
Anderson, Annette	Dahl, Ron / Judy	Hediger, Randy / Jean
Anderson, Robert	Daniels, Bruce	Hill, Charles / Mary
Arguello, Francisca	Davidson, Linda	Hill, Leona
Armstrong Family Trust	Davis, Dan / Sandy	Hochbein, Bill / Roselynn
Armstrong, Howard / Eleanor	Davis, Jack / Mitzi	Hollaman, Timothy
Arndt, Ray / Cindy	Dazbog Coffee / C Cubed, Inc	Holtzer, Thomas / Irene
Asche, Lyle / Janese	Degregorio, Mark	Horn, John / Kathryn
Astorga, Jim / Nancy	Desuza, Frank / Fedosia	Horner, Donald / Janice
Bainer, Kevin / Helene	Diederich, Tom / Lisa	Horner, Jim / Cindy
Baker, Barry / J Karyl Ting	Dion, Joseph / Marilyn	Hueser, Joseph / Kay
Baker, Pat	Dixon, Roland	Hunter, Harry / Constance
Barnhart, Danny / Amanda	Doherty, Paul / Kathryn Huyvaert	Hutchinson, Diana
Bartmann, Heather	Downing, Shane / Teri Tracy	Huzieff, Sean / Julia
Bassetti, Darlene	Eagan-Foster, Tammie	James, Susan
Bates, Harry / Carol Dollard	Edwards, Howard / Helen	Jacobson, Cecilla
Batman, Leslie / Janet	Ehrman, Joe	John, Robert
Beckemeyer, Bob / Theresa	Elkins, Jay / Rebecca	John, Dave / Linda
Beloncik, Terry / Chris	Ellmann, Jerry / Patti	Johnson, Anna
Bender, Tom	Elsner, Jeff / Carol	Johnson, Cinthia
Bennett, Dave	Embrey, William / Elaine	Johnson, Darrell
Benshoof, John / D. Cheuvront	England, Richard / Karen	Johnson, LaRue / Mary
Berquist Farms	Ewing, Rex / Lavonne	Jones, David / Lorinda
Berquist, Harold / Janice	Eystone, Gail	Jordan, Rick / Vicky
Best, David / Katharine	Fackler, Glen / Carol	Kainu, Anne
Bevers, Mike / Melanie	Fagan, Sean / Laura	Keirns, Don / Wanda
Billica, Roger	Fahey, Dan / Kathy	Kendall, Lon / Kathy
Bolte, John / Marian	Fecteau, Tim	Kertenian, Raphy
Boltz, Willie / Lori	Fialko, John / Linda	Kindsfather, Robert / Ollie
Bowen, Zack / Stephanie Hewitt	Figi, Randall / Marlies	Knab, Tom / Lynda
Brack, Jeff / Gretchen Long	Filipi, Arne / Beverly	Knoedler, Louise
Braden, Harold / Caroline	Finley, Jim	Kooser, John
Brandt, David / Danna	Fisher, Carl / Holly Randell	Koren, Steve
Brault, Aaron / Stephanie	Fortenberry, Vance / Trudie	Koturov, Marisue / Daneil
Brazill, Richard / Jacqueline	Fowler, Robert	Kramer, Dan / Donna
Breest, Chris / Lindy	Franklin, Ed / Laurie	Kramer, Martha
Breeze, Frank / Sharon	Frei, Nicholas	Kucera, Lindsay / Lana
Brien, Dan / Tracey	Friedman, Greg	Lam, Ron / Barb
Brockman, Michael / Stephanie	Garry, Franklyn / Mary Adams	Laurenroth, William / Ingrid Burke
Budge, David / Carol	Gebo, Michael / Paula	Lawson, Jeremy / Jackie
Bureker, Richard / Debbie	Gilliland, Gary / Charline	Lemert, Gary / Martha
Burggraff, Gerri	Goedl, Ray / Phyllis	Levick, Bill / Joan
Burrows, Royal / Sue	Goff, David	Ligon, Thomas / Linda
Cain, David / Connie	Golden Harvest Company	Lira, Ernest / Judith
Cairns, Terry / Inara Rudmanis	Gordon, William / June	Lloyd, Alan / Barbara
Campbell, Bruce / Vicki	Gore, Michael / Petra	Lund, Richard / Elenore
Carey, Patricia	Gorpf Nfri / Tonia Bouska	Lunt, Jeff / Rebecca
Carter, Ray	Graves, Sherry	Lyn, Marsha
Center, Janet	Gray, Charles / Caroline	Lynam, Ronald / Julie
Ceplecha, Len / Cheryl	Gray, Jim / Marcy	Magruder, Andy
Cerovski, Errol / Annette Holt	Griffin, Scott / Beverly	Masone, Joseph / Mary
Cheuvront, Debra	Guli, Mike / Sharon	Mattison, Harold / Linda
Clagett, George / Sharon	Guyton, James	Mattor, Bill / Kathie
Cletcher, Amy	Hager, Jack / Linda	Maxwell, Floyd / Ethel
Cloudy Pass Owners Assoc.	Hamilton, Diana	May, Steve / Joy
Cobb, Louis / Christine	Hamilton, Scott / Patty	McCracken, Charles / Gloria
Coffey, Matt	Hammond, Alan / Jean	McCracken, Mark / Diane McCarthy
Columbine Lodge	Hansen, Michael / Jan	McCarthy, Joseph

## December 31, 2016 Annual Drive, cont'd.

McDonald, Mark / Dinny Falkenburg  
Mead, Edward / Lynn Clark  
Mehaffey, Ray / Sonja  
Meredith, William G.  
Meyers, Dale / Cindi  
Mile High Land & Homes  
Miller, Alan  
Miller, CW / Carol  
Miller, Mike / Paula  
Miller, Norm / Joan  
Miller, Ted / Darla  
Minch, Peggy Sue  
Mitchell, Barbara  
Mohr, Erik / Candice  
Montague, Ellen  
Moore, Rolland  
Morgan, Bryan / Axson  
Morgan, Axson Brown  
Mounts, Russell / Jeannie  
Muirhead, Larry / Sharon  
Mulvihill, Deanne  
Murphy, Cindy  
Mutcher, Dennis / Joyce  
Neal, Frank / Sharon  
Neergaard, Kenneth / Marian  
Nelson, Marvin / Patricia  
Nelson, Rob / Lisa  
Nett, Terry / Terry  
Neumon, Norman / Viva  
Newman, Paul  
Newton, Jim  
Norris, Robert / Pamela Gilles  
O'Brien, Michael  
O'Connell, Robert / Margie  
O'Connor, Michael  
Oakley, Allen  
Oline, William / Marilyn  
Olson, Dale  
Oppenlander, John / D. Richmond  
Otte, Gary / Jean  
Paris, Leslie  
Paul, Eldor / Phyllis  
Perry, Elizabeth  
Perry, Marty / Terry  
Peyton, Lee  
Pfitzer, Neal / Marlys  
Pietruszewski, Robert / Ann Fleming  
Pine Acres Road Assoc.  
Pinkert, Jeff / Lisa  
Porensky, Louren  
Powers, Barbara  
Price Linda  
Prudhomme, James / Cathy

Quave, David / Betty  
Ravenschlag, Ralph / Cheryl  
Reilly, Randall / Sandra  
Richardson Family Trust  
Rommel, Kurt / Marga  
Rosenberg, Walt / Paula  
Ruder, Ernst  
Rutt, Wes, Nicki  
Ryan, Marie-Laure  
Saunders, Howard / Jean  
Schaake, Jill Marie  
Schleber, Hank / Lori  
Schleppy, Wendy  
Schiffbauer, Michelle  
Schipper, Bill / Linda  
Schlicher, Chris  
Schneider, Gary / Kate Duffus  
Schneider, Robert / Joan  
Schulke, Will / Erin Peterson  
Seneca, Martin  
Shaklee, James / Margaret  
Shandley, Jack / Renee  
Shellhammer, Joseph / G. Borin  
Shenk, Tanya  
Shenk-Brien, Tracey  
Sheriff, Nancy  
Shetler, Terry / Bonnie  
Shulman, Steven / Deborah  
Siegel, HJ / Janet  
Sipin, Anne  
Skelton, Joe / Deanna  
Smethurst, John / Ruby  
Smith, Charles / Sandra  
Smith, Steven / Anne  
Snyder, Dale / Marilyn  
Snyder, John  
Starkweather, Tim / Mary  
Staubs, James, Peggy  
Steadman, James / Karen  
Steinbock, Kristie  
Stephens, Jon / Susanne  
Stevens, Clinton / Teri  
Stewart, Ian  
Stock, Barbara  
Stringtown Gulch Road Assoc.  
Sullivan, Carol  
Sullivan, Patricia / Erin Lange  
Swartz, Nathan  
Swenson, Charles / Elizabeth  
Swenson, Dennis  
Talarico, LeAnna  
Talarico, Ronald / Nanette  
Taylor, Leisa

Thielen, Robert  
Thomas, David / Pamela  
Timberlake, Allan / Liza  
Timberlake, Jack / Phoebe  
Tisthammer, Thomas / Bridget  
Tjornehoj, David / Diana  
Tri-Life Properties LLC  
Turner, Doug / Valita  
Tysinger, Greg / Susan Floyd  
Vannorsdel, Dick / Carol  
Veile, Kathleen  
Warren, Jeanette  
Watts, Thomas  
Weiler, Richard / Patrica  
Wells, Marcia  
Wensman, Patrick  
Westfall, Sallie  
White, Phil / Christie  
Whole Health Research Alliance  
Wile, FM / Kathy Stowe  
Wilgers, Chris / Tammy  
Williams, Barbara  
Williams, Diane  
Williams, Erik  
Williams, James / Patti  
Wilson, Tom  
Wolf, Jeff / Donna  
Wood, Chuck / Kathleen  
Wood, Clint  
Workman, Kim  
Yarberry, Jeff / Michele  
Yarnell, Tom / Vivian  
Zelenak, Steve / Amy  
Zipse, Joy

The Ristwatch reserves the right to edit, refuse, reject or cancel any article or ad at any time. We base this decision on our responsibility to our readers. We will not knowingly print any article or ad that is misleading or untruthful. Articles submitted to the Ristwatch are a representation of the author and not necessarily an endorsement by the Rist Canyon Volunteer Fire Department.

**Thanks to all our donors!**

**If we missed you, please call 970/419-0397.**

Rist Canyon Volunteer Fire Department  
P. O. Box 2  
Bellvue, CO 80512  
[www.rcvfd.org](http://www.rcvfd.org)

2017 RCVFD Board of Directors — [RCVFDboard@rcvfd.org](mailto:RCVFDboard@rcvfd.org)

President	Dale Snyder	484-8351	
Vice President	Jenn Nolte	231-1507	
2nd VP, Chief	Carol Dollard	484-9647	<a href="mailto:chief@rcvfd.org">chief@rcvfd.org</a>
Treasurer	Richard Lund	419-0397	
Secretary	Leisa Taylor	493-1236	
Ristwatch Editor	Bridget Tisthammer	484-6724	<a href="mailto:ristwatch@rcvfd.org">ristwatch@rcvfd.org</a>

Area Representatives

Buckhorn	Position Open	
Davis Ranch	Deb Pedersen	224-2333
Rist Canyon	Juana Jackson	495-1815
Stove Prairie	Jill Smith	482-0275
Stratton Park	Louise Creager	217-6843 (cell)
Whale Rock	Brian Finley	692-1777

**Annual Festival Contact**  
[festivalcoordinators@rcvfd.org](mailto:festivalcoordinators@rcvfd.org)

**Database Operator**  
(Add, remove or correct address)  
Richard Lund 970/419-0397